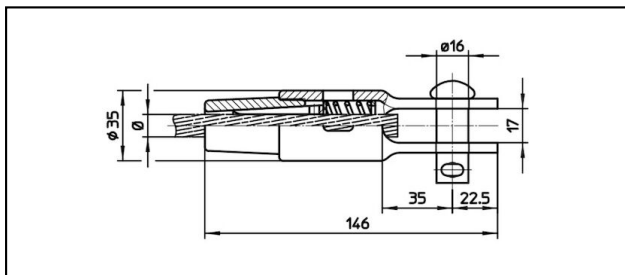
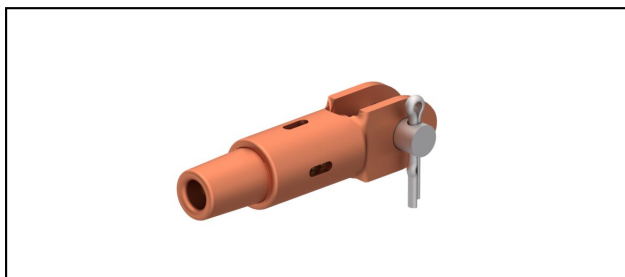


Morse di amarro

■ GCK146/17 Morsa di amarro



Applicazione

Conduttori in Cu, Cu-acciaio o Bz sottoposti a tiro meccanico


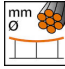
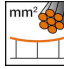
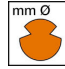


Caratteristiche

Carico di esercizio min. 3 kN / max. 25 kN

Carico di rottura del corpo min. 80 kN

Materiale

Corpo CuNiSi / Cono AIBz o CuNiSi

Rif. Articolo										
615.046.150	S85	11.8	85							0.6

Specifiche tecnici: **Morsa di amarro GCK146/17**

Articolo no.	615.046.150
ferroviaria prodotto nome	S85
Diametro funi portanti	11.8 mm
Sezione funi portanti	85 mm ²
Specifiche commerciali	
Numero di tariffa doganale	85359000
paese di origine	CH
Specificazione logistica	
Chilo / pezzo	0.6 kg