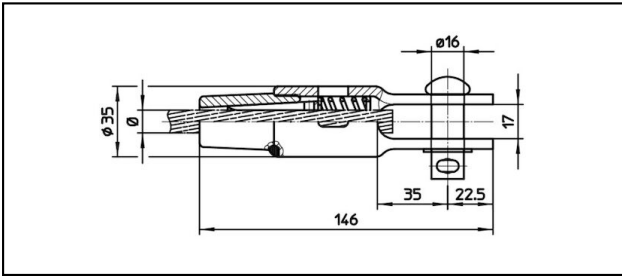
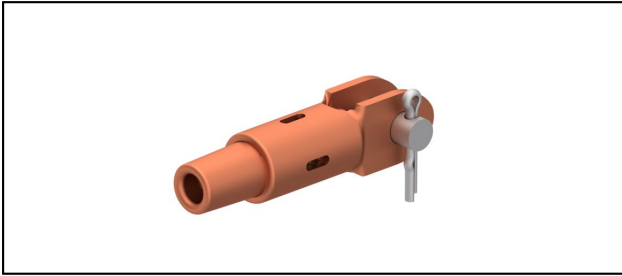


Morse di amarro

■ GCK146/17 Spc. Morsa di amarro



Applicazione

Conduttori in Cu, Cu-acciaio o Bz sottoposti a tiro meccanico

Caratteristiche

Carico di esercizio min. 3 kN / max. 25 kN



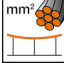
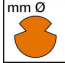



Carico di rottura del corpo min. 80 kN

Materiale

Corpo CuNiSi / Cono AIBz o CuNiSi

Legenda

1) Con sicura e rondella

Rif. Articolo									
615.049.102	48	8.9	48					0.61	1

Specifiche tecniche: **Morsa di amarro GCK146/17 Spc.**

Articolo no.	615.049.102
ferroviaria prodotto nome	48
Diametro funi portanti	8.9 mm
Sezione funi portanti	48 mm ²
osservazione	1
Specifiche commerciali	
Numero di tariffa doganale	0
paese di origine	indeterminato
Texte	
osservazione	1
Specificazione logistica	
Chilo / pezzo	0.61 kg

