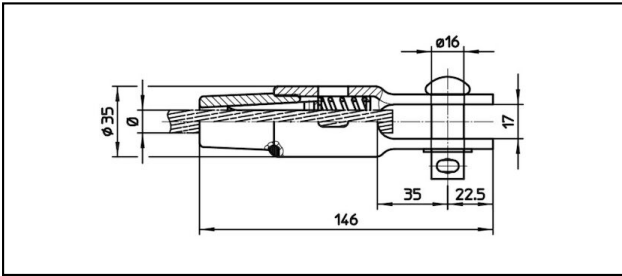
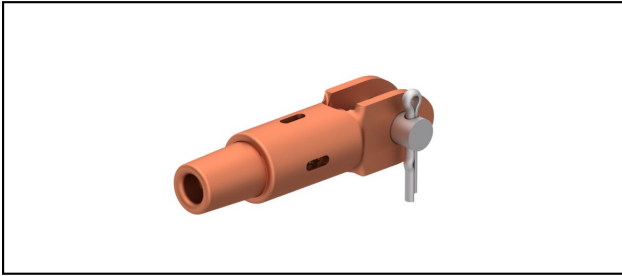


## Morse di amarro

### ■ GCK146/17 Spc. Morsa di amarro



#### Applicazione

Conduttori in Cu, Cu-acciaio o Bz sottoposti a tiro meccanico

#### Caratteristiche

Carico di esercizio min. 3 kN / max. 25 kN



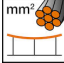
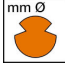



Carico di rottura del corpo min. 80 kN

#### Materiale

Corpo CuNiSi / Cono AIBz o CuNiSi

#### Legenda

1) Con sicura e rondella

Rif. Articolo									
615.052.100	104	11.3	104					0.61	1

Specifiche tecniche: **Morsa di amarro GCK146/17 Spc.**

Articolo no.	615.052.100
<b>ferroviaria prodotto nome</b>	104
<b>Diametro funi portanti</b>	11.3 mm
<b>Sezione funi portanti</b>	104 mm <sup>2</sup>
<b>osservazione</b>	1
Specifiche commerciali	
<b>Numero di tariffa doganale</b>	85359000
<b>paese di origine</b>	CH
Texte	
<b>osservazione</b>	1
Specificazione logistica	
<b>Chilo / pezzo</b>	0.61 kg

