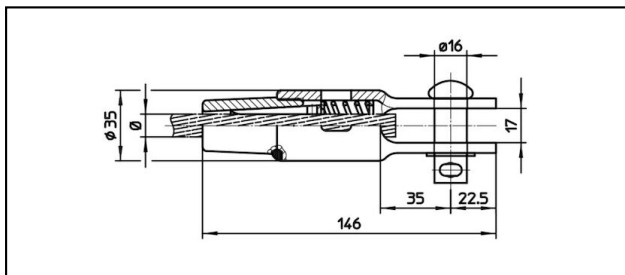
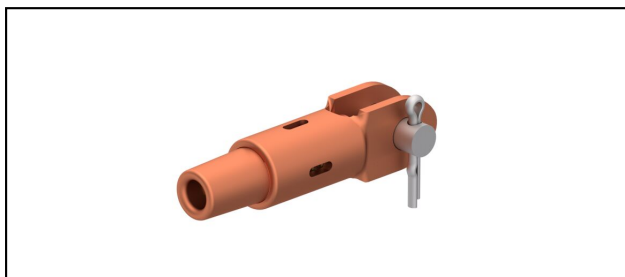


Morse di amarro

■ **GCK146/17 Spc.** Morsa di amarro**Applicazione**

Conduttori in Cu, Cu-acciaio o Bz sottoposti a tiro meccanico

Caratteristiche

Carico di esercizio min. 3 kN / max. 25 kN


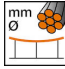
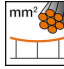
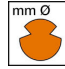



Carico di rottura del corpo min. 80 kN

Materiale

Corpo CuNiSi / Cono AIBz o CuNiSi

Legenda

1) Con sicura e rondella

Rif. Articolo									
615.051.100	FD100			12.8	100			0.61	1

Specifiche tecniche: **Morsa di amarro GCK146/17 Spc.**

Articolo no.	615.051.100
ferroviaria prodotto nome	FD100
Diametro filo di contatto	12.8 mm
Sezione filo di contatto	100 mm ²
osservazione	1
Specifiche commerciali	
Numero di tariffa doganale	85359000
paese di origine	CH
Texte	
osservazione	1
Specificazione logistica	
Chilo / pezzo	0.61 kg

