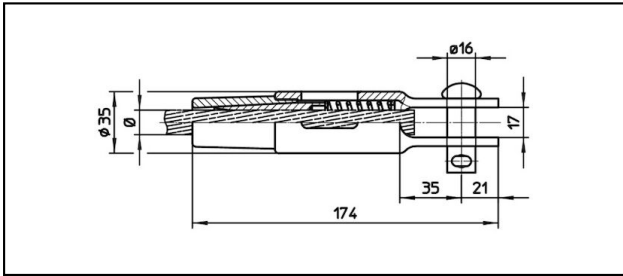
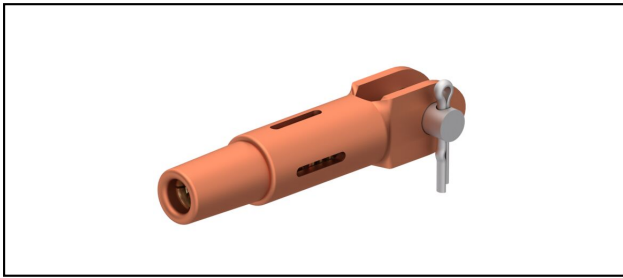


Morse di amarro

■ GCK174/17 Morsa di amarro



Applicazione

Conduttori in Cu, Cu-acciaio o Bz sottoposti a tiro meccanico


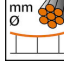
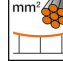



Caratteristiche

Carico di esercizio min. 3 kN / max. 25 kN

Carico di rottura del corpo min. 80 kN

Materiale

Corpo CuNiSi / Cono AIBz o CuNiSi

| Rif. Articolo |  |  |  |  |  | | | | |  |
|---------------|---|---|---|---|---|--|--|--|--|---|
| 615.040.105 | S120 | 14 | 120 | | | | | | | 0.73 |

Specifiche tecnici: **Morsa di amarro GCK174/17**

| | |
|-----------------------------------|---------------------|
| Articolo no. | 615.040.105 |
| ferroviaria prodotto nome | S120 |
| Diametro funi portanti | 14 mm |
| Sezione funi portanti | 120 mm ² |
| Specifiche commerciali | |
| Numero di tariffa doganale | 85359000 |
| paese di origine | CH |
| Specificazione logistica | |
| Chilo / pezzo | 0.73 kg |

