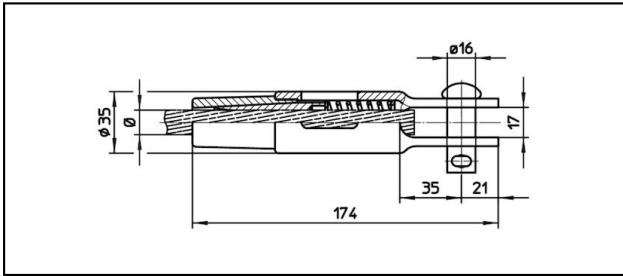
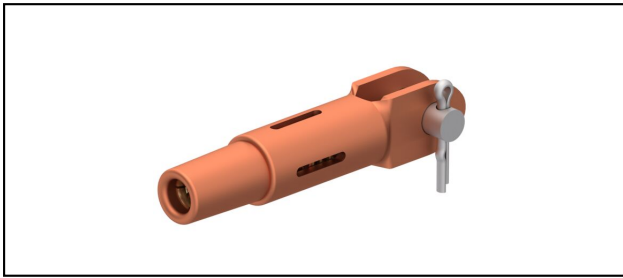


## Morse di amarro

### ■ GCK174/17 Morsa di amarro



#### Applicazione

Conduttori in Cu, Cu-acciaio o Bz sottoposti a tiro meccanico



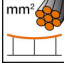
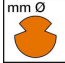


#### Caratteristiche

Carico di esercizio min. 3 kN / max. 25 kN

Carico di rottura del corpo min. 80 kN

#### Materiale

Corpo CuNiSi / Cono AIBz o CuNiSi

Rif. Articolo										
615.041.106	S150	15.8	150							0.72

Specifiche tecnici: **Morsa di amarro GCK174/17**

Articolo no.	615.041.106
<b>ferroviaria prodotto nome</b>	S150
<b>Diametro funi portanti</b>	15.8 mm
<b>Sezione funi portanti</b>	150 mm <sup>2</sup>
Specifiche commerciali	
<b>Numero di tariffa doganale</b>	85359000
<b>paese di origine</b>	CH
Specificazione logistica	
<b>Chilo / pezzo</b>	0.72 kg