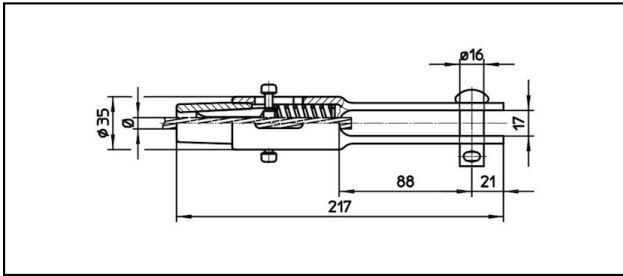
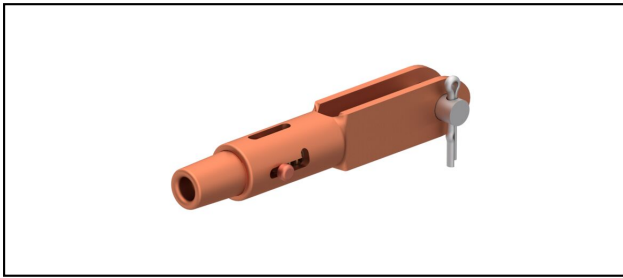


## Morse di amarro

■ **GCL217/17** Morsa di amarro**Applicazione**

Conduttori in Cu, Cu-acciaio o Bz sottoposti a tiro meccanico

**Caratteristiche**

Carico di esercizio min. 3 kN / max. 25 kN

Carico di rottura del corpo min. 80 kN



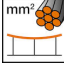
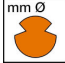



**Materiale**

Corpo CuNiSi / Cono AIBz o CuNiSi

**Legenda**

1) Cono in acciaio inox per cavi in inox

2) Senza bullone Ø 16 (foro Ø 16.75)

Rif. Articolo									
615.087.027	D8	7.9	50					0.86	

Specifiche tecnici: **Morsa di amarro GCL217/17**

Articolo no.	615.087.027
<b>ferroviaria prodotto nome</b>	D8
<b>Diametro funi portanti</b>	7.9 mm
<b>Sezione funi portanti</b>	50 mm <sup>2</sup>
Specifiche commerciali	
<b>Numero di tariffa doganale</b>	85359000
<b>paese di origine</b>	CH
Specificazione logistica	
<b>Chilo / pezzo</b>	0.86 kg