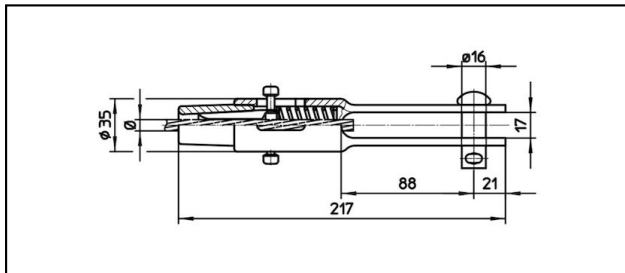
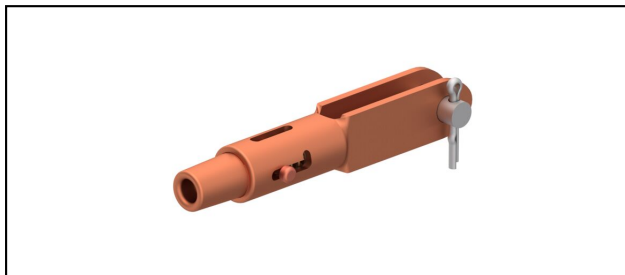


Morse di amarro

■ **GCL217/17** Morsa di amarro**Applicazione**

Conduttori in Cu, Cu-acciaio o Bz sottoposti a tiro meccanico

Caratteristiche

Carico di esercizio min. 3 kN / max. 25 kN

Carico di rottura del corpo min. 80 kN


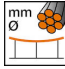
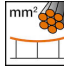
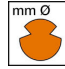



Materiale

Corpo CuNiSi / Cono AIBz o CuNiSi

Legenda

1) Cono in acciaio inox per cavi in inox

2) Senza bullone Ø 16 (foro Ø 16.75)

Rif. Articolo									
615.091.102	S50	8.9	50					0.86	

Specifiche tecnici: **Morsa di amarro GCL217/17**

Articolo no.	615.091.102
ferroviaria prodotto nome	S50
Diametro funi portanti	8.9 mm
Sezione funi portanti	50 mm ²
Specifiche commerciali	
Numero di tariffa doganale	85359000
paese di origine	CH
Specificazione logistica	
Chilo / pezzo	0.86 kg