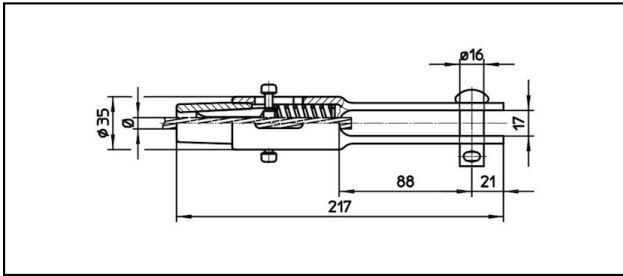
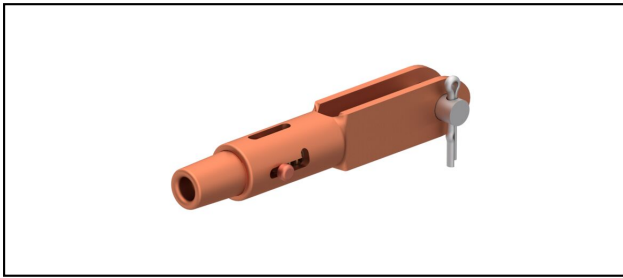


## Morse di amarro

### ■ GCL217/17 Morsa di amarro



#### Applicazione

Conduttori in Cu, Cu-acciaio o Bz sottoposti a tiro meccanico

#### Caratteristiche

Carico di esercizio min. 3 kN / max. 25 kN

Carico di rottura del corpo min. 80 kN



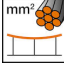
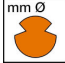



#### Materiale

Corpo CuNiSi / Cono AIBz o CuNiSi

#### Legenda

1) Cono in acciaio inox per cavi in inox

2) Senza bullone Ø 16 (foro Ø 16.75)

Rif. Articolo									
615.128.103	S70	10.8	70					0.76	2

Specifiche tecniche: **Morsa di amarro GCL217/17**

Articolo no.	615.128.103
<b>ferroviaria prodotto nome</b>	S70
<b>Diametro funi portanti</b>	10.8 mm
<b>Sezione funi portanti</b>	70 mm <sup>2</sup>
<b>osservazione</b>	2
Specifiche commerciali	
<b>Numero di tariffa doganale</b>	85359000
<b>paese di origine</b>	CH
Texte	
<b>osservazione</b>	2
Specificazione logistica	
<b>Chilo / pezzo</b>	0.76 kg

