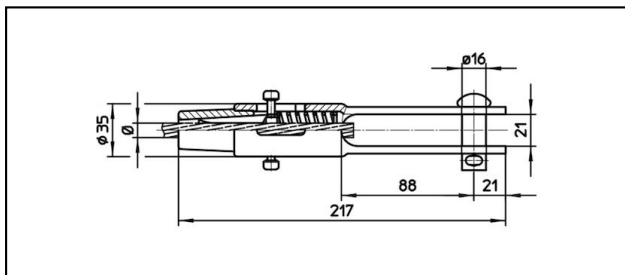
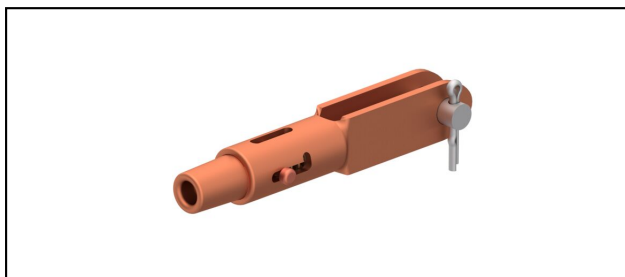


Morse di amarro

■ **GCL217/21** Morsa di amarro**Applicazione**

Conduttori in Cu, Cu-acciaio o Bz sottoposti a tiro meccanico


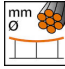
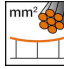

Caratteristiche

Carico di esercizio min. 3 kN / max. 25 kN

Carico di rottura del corpo min. 80 kN

Materiale

Corpo CuNiSi / Cono AIBz

Rif. Articolo									
615.100.103	S70	10.8	70						0.86

Specifiche tecnici: **Morsa di amarro GCL217/21**

Articolo no.	615.100.103
ferroviaria prodotto nome	S70
Diametro funi portanti	10.8 mm
Sezione funi portanti	70 mm ²
Specifiche commerciali	
Numero di tariffa doganale	85359000
paese di origine	CH
Specificazione logistica	
Chilo / pezzo	0.86 kg