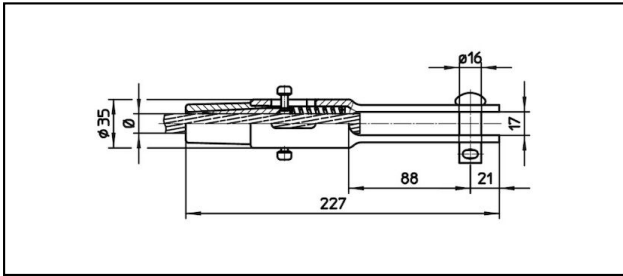
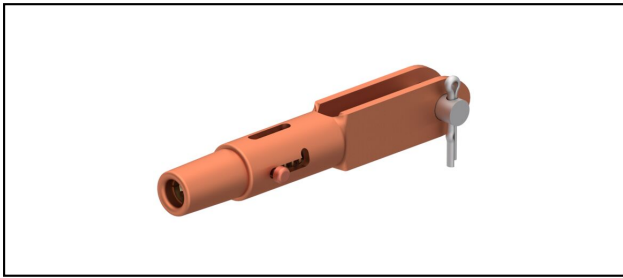


Morse di amarro

■ GCL227/17 Morsa di amarro



Applicazione

Conduttori in Cu, Cu-acciaio o Bz sottoposti a tiro meccanico



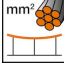
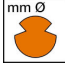


Caratteristiche

Carico di esercizio min. 3 kN / max. 25 kN

Carico di rottura del corpo min. 80 kN

Materiale

Corpo CuNiSi / Cono AIBz

Rif. Articolo									
615.107.105	FD120			12.9	120				0.91

Specifiche tecnici: **Morsa di amarro GCL227/17**

Articolo no.	615.107.105
ferroviaria prodotto nome	FD120
Diametro filo di contatto	12.9 mm
Sezione filo di contatto	120 mm ²
Specifiche commerciali	
Numero di tariffa doganale	85359000
paese di origine	CH
Specificazione logistica	
Chilo / pezzo	0.91 kg