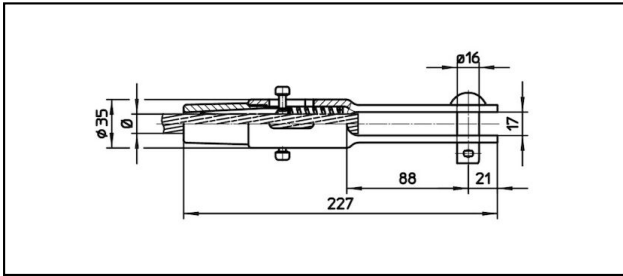
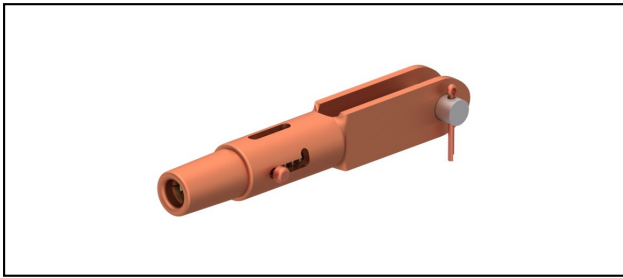


Morse di amarro

■ GCL227/17 Spc. Morsa di amarro

**Applicazione**

Conduttori in Cu, Cu-acciaio o Bz sottoposti a tiro meccanico

Caratteristiche


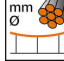
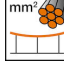



Con copiglia in Cu

Carico di esercizio min. 3 kN / max. 25 kN

Carico di rottura del corpo min. 80 kN

Materiale

Corpo CuNiSi / Cono AIBz

Rif. Articolo									
615.199.105	S120	14	120						0.91

Specifiche tecnici: **Morsa di amarro GCL227/17 Spc.**

Articolo no.	615.199.105
ferroviaria prodotto nome	S120
Diametro funi portanti	14 mm
Sezione funi portanti	120 mm ²
Specifiche commerciali	
Numero di tariffa doganale	85359000
paese di origine	CH
Specificazione logistica	
Chilo / pezzo	0.91 kg