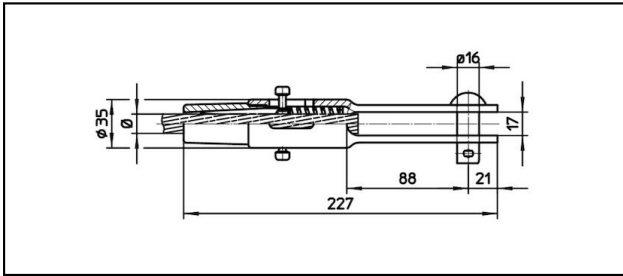
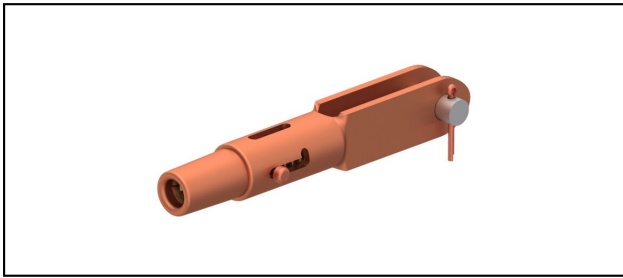


Morse di amarro

■ GCL227/17 Spc. Morse di amarro



Applicazione

Conduttori in Cu, Cu-acciaio o Bz sottoposti a tiro meccanico

Caratteristiche


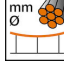
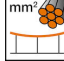



Con copiglia in Cu

Carico di esercizio min. 3 kN / max. 25 kN

Carico di rottura del corpo min. 80 kN

Materiale

Corpo CuNiSi / Cono AIBz

Rif. Articolo									
615.201.106	FD150			14.5	150				0.9

Specifiche tecnici: **Morse di amarro GCL227/17 Spc.**

Articolo no.	615.201.106
ferroviaria prodotto nome	FD150
Diametro filo di contatto	14.5 mm
Sezione filo di contatto	150 mm ²
Specifiche commerciali	
Numero di tariffa doganale	85359000
paese di origine	CH
Specificazione logistica	
Chilo / pezzo	0.9 kg