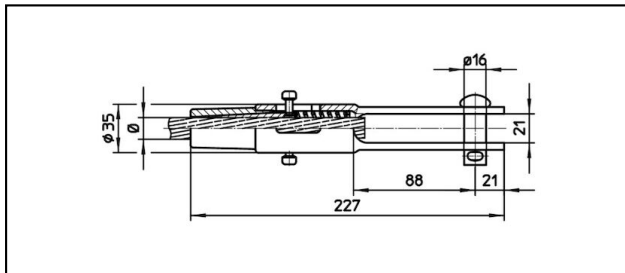
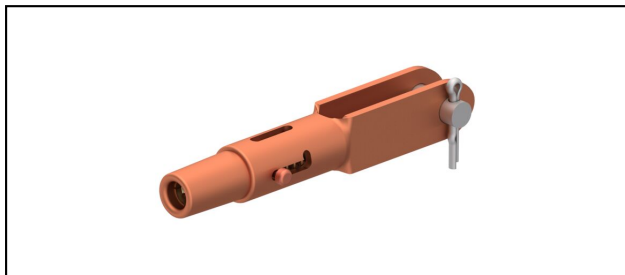


Morse di amarro

■ GCL227/21 Morsa di amarro



Applicazione

Conduttori in Cu, Cu-acciaio o Bz sottoposti a tiro meccanico



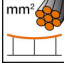
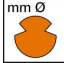


Caratteristiche

Carico di esercizio min. 3 kN / max. 25 kN

Carico di rottura del corpo min. 80 kN

Materiale

Corpo CuNiSi / Cono AIBz

Rif. Articolo									
615.101.106	S150	15.8	150						0.89

Specifiche tecnici: **Morsa di amarro GCL227/21**

Articolo no.	615.101.106
ferroviaria prodotto nome	S150
Diametro funi portanti	15.8 mm
Sezione funi portanti	150 mm ²
Specifiche commerciali	
Numero di tariffa doganale	85359000
paese di origine	CH
Specificazione logistica	
Chilo / pezzo	0.89 kg