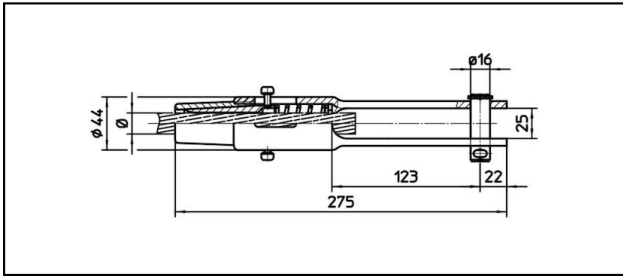
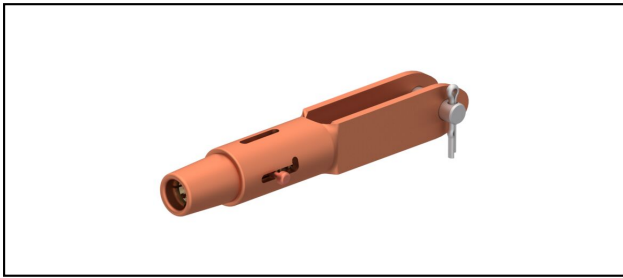


Morse di amarro

■ GCL275/25 Morsa di amarro



Applicazione

Conduttori in Cu, Cu-acciaio o Bz sottoposti a tiro meccanico



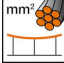

Caratteristiche

Carico di esercizio min. 3 kN / max. 25 kN

Carico di rottura del corpo min. 80 kN

Materiale

Corpo CuNiSi / Cono AIBz

Rif. Articolo										
615.112.171	S160	16.8	160							1.55

Specifiche tecnici: **Morsa di amarro GCL275/25**

Articolo no.	615.112.171
ferroviaria prodotto nome	S160
Diametro funi portanti	16.8 mm
Sezione funi portanti	160 mm ²
Specifiche commerciali	
Numero di tariffa doganale	85359000
paese di origine	CH
Specificazione logistica	
Chilo / pezzo	1.55 kg