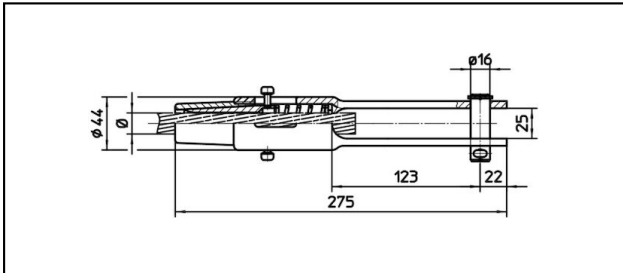
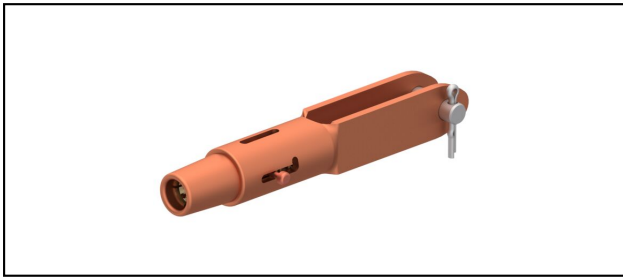


## Morse di amarro

### ■ GCL275/25 Morsa di amarro



#### Applicazione

Conduttori in Cu, Cu-acciaio o Bz sottoposti a tiro meccanico



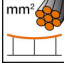

#### Caratteristiche

Carico di esercizio min. 3 kN / max. 25 kN

Carico di rottura del corpo min. 80 kN

#### Materiale

Corpo CuNiSi / Cono AIBz

Rif. Articolo									
615.108.111	S180	17.5	180						1.55

Specifiche tecnici: **Morsa di amarro GCL275/25**

Articolo no.	615.108.111
<b>ferroviaria prodotto nome</b>	S180
<b>Diametro funi portanti</b>	17.5 mm
<b>Sezione funi portanti</b>	180 mm <sup>2</sup>
Specifiche commerciali	
<b>Numero di tariffa doganale</b>	85359000
<b>paese di origine</b>	CH
Specificazione logistica	
<b>Chilo / pezzo</b>	1.55 kg