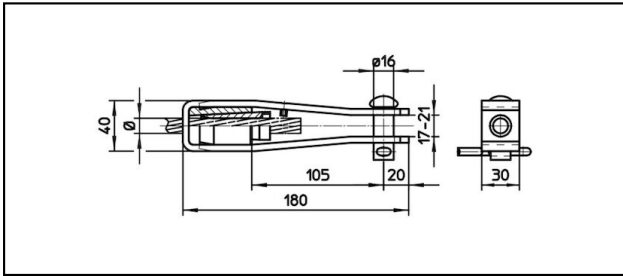
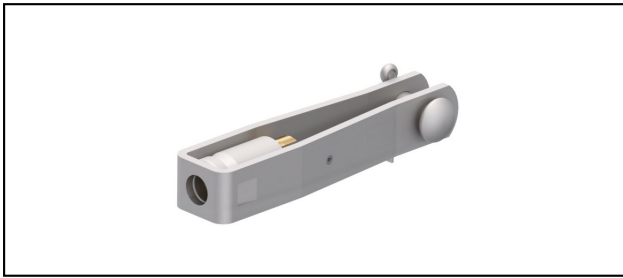


Morse di amarro

■ **GI40/30,B16** Morsa di amarro**Applicazione**

Conduttori Cu, Cu-acciaio o Bz sottoposti a tiro meccanico

Caratteristiche

Carico di esercizio min. 3 kN / max. 25 kN



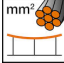
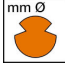



Carico di rottura del corpo min. 60 kN

Materiale

Corpo acciaio inossidabile. Cono AlBz o in acciaio inossidabile.

Legenda

- 1) Cono in acciaio inossidabile per cavi in inox
- 2) Con codice colore

Rif. Articolo									
610.028.103	FD85/S70	11.3	70	11.3	85			0.82	

Specifiche tecnici: **Morsa di amarro GI40/30,B16**

Articolo no.	610.028.103
ferroviaria prodotto nome	FD85/S70
Diametro funi portanti	11.3 mm
Sezione funi portanti	70 mm ²
Diametro filo di contatto	11.3 mm
Sezione filo di contatto	85 mm ²
Specifiche commerciali	
Numero di tariffa doganale	85359000
paese di origine	CH
Specificazione logistica	
Chilo / pezzo	0.82 kg

