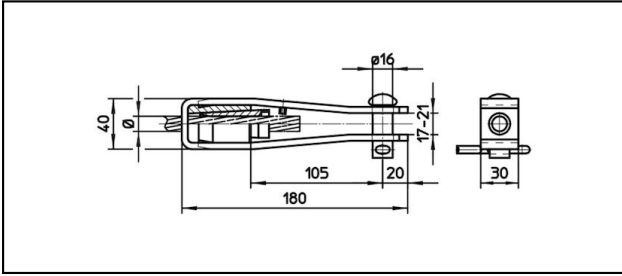


Morse di amarro

■ GI40/30,B16 Morsa di amarro



Applicazione

Conduttori Cu, Cu-acciaio o Bz sottoposti a tiro meccanico

Caratteristiche

Carico di esercizio min. 3 kN / max. 25 kN



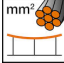
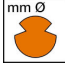



Carico di rottura del corpo min. 60 kN

Materiale

Corpo acciaio inossidabile. Cono AlBz o in acciaio inossidabile.

Legenda

- 1) Cono in acciaio inossidabile per cavi in inox
- 2) Con codice colore

Rif. Articolo									
610.054.000	S D 6 Inox	6.3						0.82	1

Specifiche tecnici: **Morsa di amarro GI40/30,B16**

Articolo no.	610.054.000
ferroviaria prodotto nome	S D 6 Inox
Diametro funi portanti	6.3 mm
osservazione	1
Specifiche commerciali	
Numero di tariffa doganale	85359000
paese di origine	CH
Texte	
osservazione	1
Specificazione logistica	
Chilo / pezzo	0.82 kg

