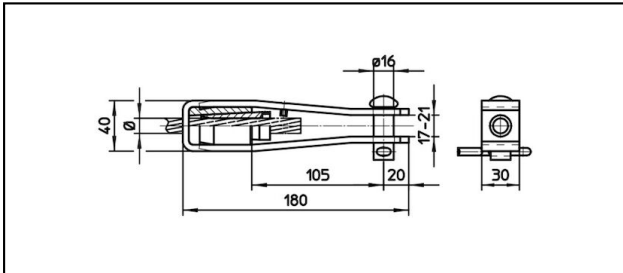
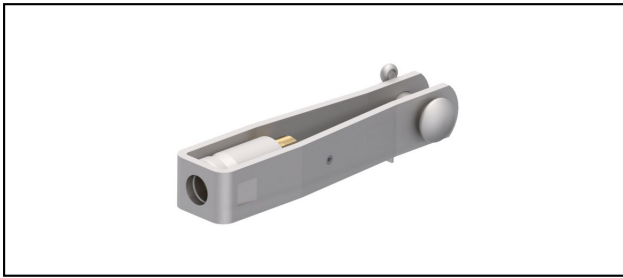


## Morse di amarro

■ **GI40/30,B16** Morsa di amarro**Applicazione**

Conduttori Cu, Cu-acciaio o Bz sottoposti a tiro meccanico

**Caratteristiche**

Carico di esercizio min. 3 kN / max. 25 kN


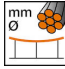
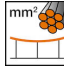
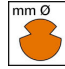



Carico di rottura del corpo min. 60 kN

**Materiale**

Corpo acciaio inossidabile. Cono AIBz o in acciaio inossidabile.

**Legenda**

- 1) Cono in acciaio inossidabile per cavi in inox
- 2) Con codice colore

Rif. Articolo									
610.058.000	S40 St	8.5	40					0.82	1

Specifiche tecniche: **Morsa di amarro GI40/30,B16**

Articolo no.	610.058.000
<b>ferroviaria prodotto nome</b>	S40 St
<b>Diametro funi portanti</b>	8.5 mm
<b>Sezione funi portanti</b>	40 mm <sup>2</sup>
<b>osservazione</b>	1
Specifiche commerciali	
<b>Numero di tariffa doganale</b>	85359000
<b>paese di origine</b>	CH
Texte	
<b>osservazione</b>	1
Specificazione logistica	
<b>Chilo / pezzo</b>	0.82 kg

