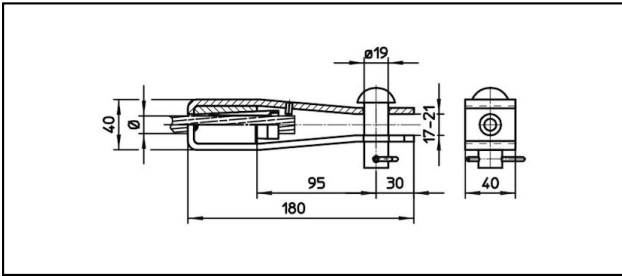


## Morse di amarro

### ■ GI40/40,B19 Spc. Morsa di amarro



#### Applicazione

Conduttori Cu, Cu-acciaio o Bz sottoposti a tiro meccanico


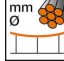
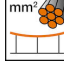



#### Caratteristiche

Carico di esercizio min. 3 kN / max. 25 kN

Carico di rottura del corpo min.60 kN

#### Materiale

Corpo in acciaio inossidabile. Cono in BzAl, bullone in acciaio zincato.

| Rif. Articolo |  |  |  |  |  |  |  |  |  |
|---------------|---|---|---|---|---|--|--|--|---|
| 610.084.000   | FD120   |   |   | 13.8  | 120   |  |  |  | 0.91  |

Specifiche tecnici: **Morsa di amarro GI40/40,B19 Spc.**

|                                   |                     |
|-----------------------------------|---------------------|
| Articolo no.                      | 610.084.000         |
| <b>ferroviaria prodotto nome</b>  | FD120               |
| <b>Diametro filo di contatto</b>  | 13.8 mm             |
| <b>Sezione filo di contatto</b>   | 120 mm <sup>2</sup> |
| Specifiche commerciali            |                     |
| <b>Numero di tariffa doganale</b> | 85359000            |
| <b>paese di origine</b>           | CH                  |
| Specificazione logistica          |                     |
| <b>Chilo / pezzo</b>              | 0.91 kg             |