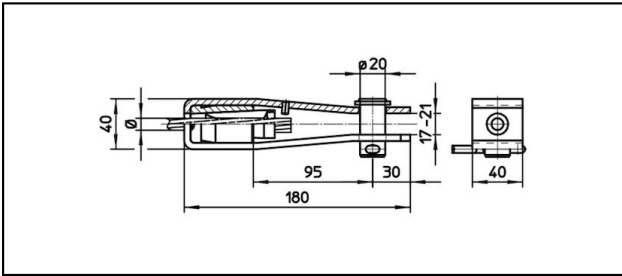


## Morse di amarro

■ **GI40/40,B20** Morsa di amarro**Applicazione**

Conduttori Cu, Cu-acciaio o Bz sottoposti a tiro meccanico

**Caratteristiche**



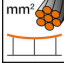
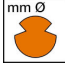



Carico di rottura del corpo min. 60 kN

**Materiale**

Corpo in acciaio inossidabile. Cono in BzAl.

**Legenda**

1) Con codice colore

Rif. Articolo									
610.008.001	S50	9.8	50					0.9	

Specifiche tecnici: **Morsa di amarro GI40/40,B20**

Articolo no.	610.008.001
<b>ferroviaria prodotto nome</b>	S50
<b>Diametro funi portanti</b>	9.8 mm
<b>Sezione funi portanti</b>	50 mm <sup>2</sup>
Specifiche commerciali	
<b>Numero di tariffa doganale</b>	85359000
<b>paese di origine</b>	CH
Specificazione logistica	
<b>Chilo / pezzo</b>	0.9 kg

