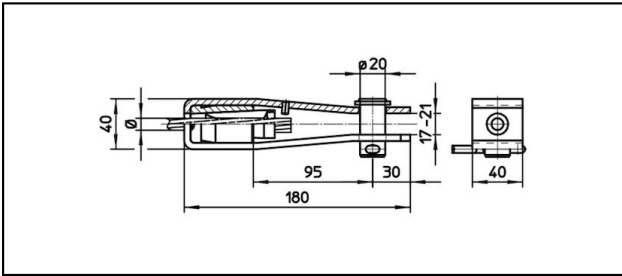


Morse di amarro

■ **G140/40,B20** Morsa di amarro**Applicazione**

Conduttori Cu, Cu-acciaio o Bz sottoposti a tiro meccanico

Caratteristiche


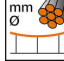
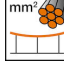




Carico di rottura del corpo min. 60 kN

Materiale

Corpo in acciaio inossidabile. Cono in BzAl.

Legenda

1) Con codice colore

Rif. Articolo									
610.100.000	S120	14	120					0.9	

Specifiche tecnici: **Morsa di amarro GI40/40,B20**

Articolo no.	610.100.000
ferroviaria prodotto nome	S120
Diametro funi portanti	14 mm
Sezione funi portanti	120 mm ²
Specifiche commerciali	
Numero di tariffa doganale	85359000
paese di origine	ZA*
Specificazione logistica	
Chilo / pezzo	0.9 kg