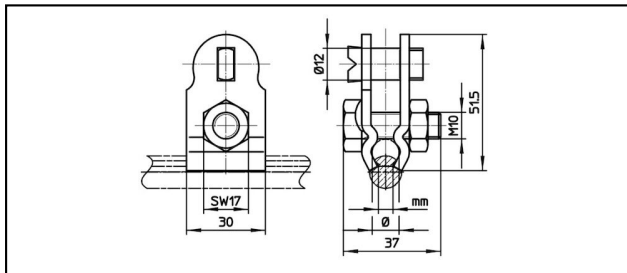
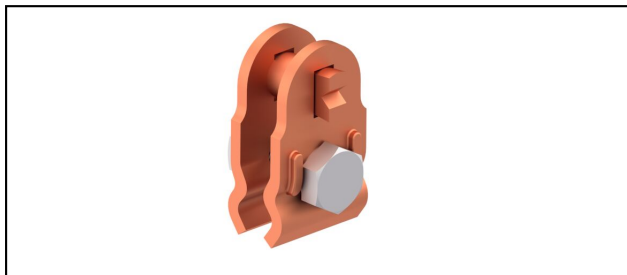


## Morsetti

## ■ SKTF1

**Applicazione**





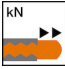

Per pendini, equipotenziali e non

**Caratteristiche**

Coppia di serraggio 20-25 Nm

**Materiale**

Corpo in CuNiSi

Rif. Articolo	 mm Ø	 mm	 mm	 mm a	 kN				 Kg
625.017.000	6.5 - 8	25 - 50	3.75	52	3.5				0.183
625.009.152	6.5 - 13	50 - 95	3.75 - 8.5	52	3.5				0.183
625.008.147	13 - 16	95 - 150	3.75 - 8.5	57	3.5				0.183

Specifiche tecnici: **SKTF1**

	625.017.000	625.009.152	625.008.147
<b>Lunghezza a</b>	52 mm		57 mm
<b>Sagomatura filo di contatto</b>	3.75 mm		
<b>Diametro funi portanti</b>	6.5 - 8 mm	6.5 - 13 mm	13 - 16 mm
<b>Sezione funi portanti</b>	25 - 50 mm <sup>2</sup>	50 - 95 mm <sup>2</sup>	95 - 150 mm <sup>2</sup>
<b>Forza di slittamento</b>	3.5 kN		
	20 - 25 N·m		
<b>Specifiche commerciali</b>			
<b>Numero di tariffa doganale</b>	85359000		
<b>paese di origine</b>	CH		
<b>Specificazione logistica</b>			
<b>Chilo / pezzo</b>	0.183 kg		

