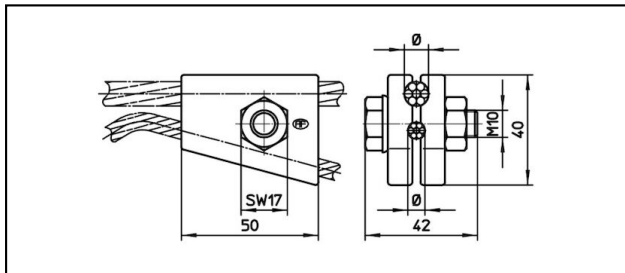
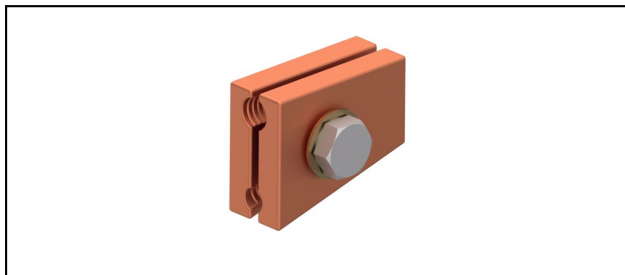


## Morsetti di serraggio varie

■ **YK50** Morsetto Y**Applicazione**

Filo a Y

**Caratteristiche**






Max. resistenza alla trazione filo a Y: 4.5 kN

Coppia di serraggio 45 Nm

**Materiale**

CuNiSi

**Legenda**1) filo a Y 25 mm<sup>2</sup>2) filo a Y 35 - 50 mm<sup>2</sup>

Rif. Articolo									
635.347.000	9	50	6.3					0.256	1
635.003.000	8.4 - 11	50 - 70	7.3 - 9					0.256	2
635.362.000	12.3	92	6.42					0.256	1

Specifiche tecnici: **Morsetto Y YK50**

	635.347.000	635.003.000	635.362.000
<b>Coppia di serraggio</b>	45 N·m		
<b>Diametro funi portanti</b>	9 mm	8.4 - 11 mm	12.3 mm
<b>Sezione funi portanti</b>	50 mm <sup>2</sup>		50 - 70 mm <sup>2</sup>
<b>Sezione del cavo-Y</b>	6.3 mm	7.3 - 9 mm	6.42 mm
Specifiche commerciali			
<b>Numero di tariffa doganale</b>	85359000		
<b>paese di origine</b>	indeterminato	CH	indeterminato
Specificazione logistica			
<b>Chilo / pezzo</b>	0.256 kg		

