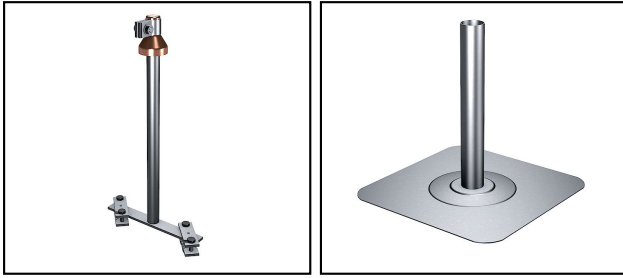


Organi captatori

■ FL 76b Passaggio per tetto piatto componenti


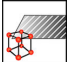

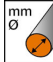
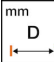




Caratteristiche

Per coperture in mastice d'asfalto, bitume o materiale sintetico

Legenda

- a) Tubo di contatto, cappello, morsetti di raccordo, 2 morsetti a croce FE 43
- b) Placca (340x340mm) con tubo attaccato saldato
- c) Cappello con collare di contatto
- d) Collare di contatto

| Rif. Articolo | Numéro-E |  |  |  |  |  | | |  |  |
|---------------|-------------|---|---|---|---|---|--|--|---|---|
| 220.018.731 | 156 941 480 | H | InoxA2 | | 6 - 9 | | | | d) | 1 |

Specifiche tecniche: **Passaggio per tetto piatto componenti FL 76b**

| | |
|--|------------------------------------|
| Articolo no. | 220.018.731 |
| Approvati classe H / N (EN 62561-1) | H |
| Materiale | InoxA2 |
| Diametro del filo | 6 - 9 mm |
| Tipo di accessori | Dach-, Wand- und Erderdurchführung |
| Superficie | non trattato |
| osservazione | d) |
| Specifiche commerciali | |
| Numero di tariffa doganale | 85389000 |
| paese di origine | CH |
| Texte | |
| osservazione | d) |

