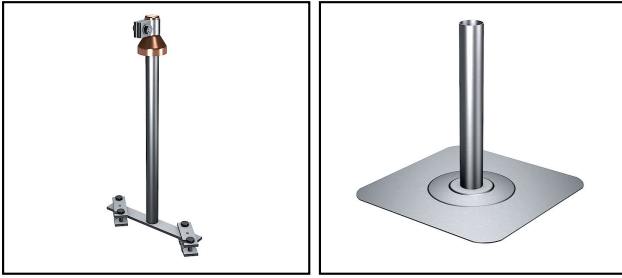


Organi captatori

FL 76b Passaggio per tetto piatto componenti


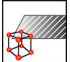

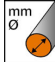
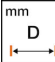




Caratteristiche

Per coperture in mastice d'asfalto, bitume o materiale sintetico

Legenda

- a) Tubo di contatto, cappello, morsetti di raccordo, 2 morsetti a croce FE 43
- b) Placca (340x340mm) con tubo attaccato saldato
- c) Cappello con collare di contatto
- d) Collare di contatto

Rif. Articolo	Numéro-E									
220.018.728	156 941 440	H	InoxA2	900	6 - 9	27			a)	2
220.018.729	156 941 430		InoxA2	480		33			b)	2
220.018.730	156 941 420	H	Cu		6 - 9				c)	1
220.018.731	156 941 480	H	InoxA2		6 - 9				d)	1

Specifiche tecnici: **Passaggio per tetto piatto componenti FL 76b**

	220.018.728	220.018.729	220.018.730	220.018.731
Approvati classe H / N (EN 62561-1)	H		H	
Materiale	InoxA2		Cu	InoxA2
Altezza H	900 mm	480 mm		
Diametro del filo	6 - 9 mm			
Tipo di accessori	Dach-, Wand- und Erderdurchführung			
Superficie	non trattato			
Diametro D	27 mm	33 mm		
Specifiche commerciali				
Numero di tariffa doganale	85389000			
paese di origine	CH			
Specificazione logistica				
VPE Peso	4.94 kg	4.494 kg		

