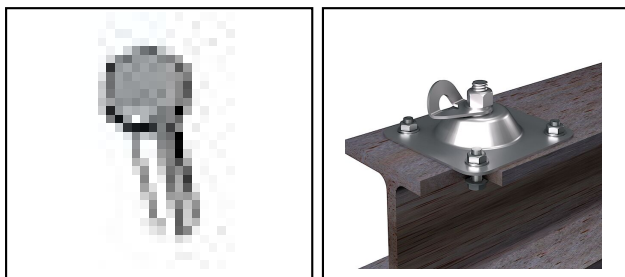
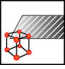




Vite, dadi, rondelle, rivetti

■ **M10** Viti**Caratteristiche**

Viti M10 per il montaggio dei punti di ancoraggio Arthur Flury su travi in acciaio

Rif. Articolo	Numéro-E									
951.04.374		InoxA4	M10x25							100
951.04.352		InoxA4	M10x30							100
951.04.334		InoxA4	M10x35							200
951.04.319		InoxA4	M10x40							100

Specifiche tecnici: **Viti M10**

	951.04.374	951.04.352	951.04.334	951.04.319
Materiale	InoxA4			
Vite	M10x25	M10x30	M10x35	M10x40
Specifiche commerciali				
Numero di tariffa doganale	0	85353000	73181500	0
paese di origine	ZA*		MAL	ZA*